

# SOYBEANS



**S28-B9E3S** BRAND

RM:  
2.8

**NEW**

CHU:  
3225



**STS**®

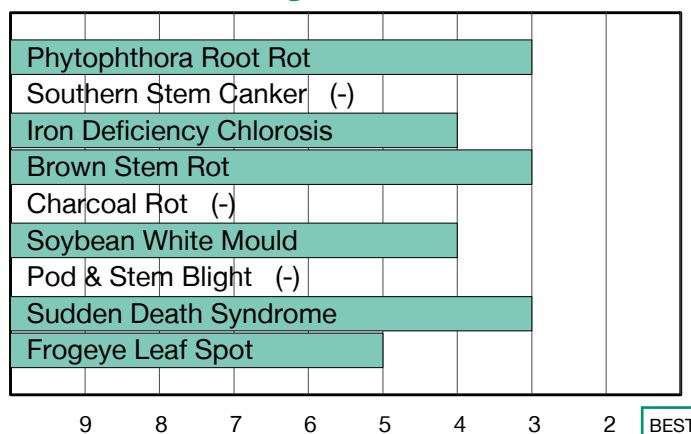
## Great Choice for Any Acre Including Variable and Poorly Drained Soils

- Very good Sudden Death Syndrome tolerance
- Medium-bush canopy, excels in drought prone conditions
- Strong Phytophthora field tolerance

### Plant Characteristics

Plant Height	<b>Medium</b>
Canopy Index	<b>5.61</b>
Branching	<b>Moderate</b>
Growth Habit	<b>Indeterminate</b>
Flower Colour	<b>Purple</b>
Pubescence Colour	<b>Gray</b>
Pod Colour	<b>Brown</b>
Hilum Colour	<b>Imperfect Black</b>
Chloride Sensitivity	<b>Includer</b>

### Disease Ratings



### Agronomic Traits

Emergence	<b>2</b>
Standability	<b>4</b>
Shatter Tolerance	<b>2</b>
Green Stem	<b>2</b>
Estimated Seed Size	<b>Large</b>
Protein	-
Oil	-
Narrow Rows	<b>3</b>
Wide Rows	<b>1</b>
Metribuzin Response	-
Sulfentrazone Response	-

### Adaptation to Soil Types

Drought Prone	<b>Good</b>
High pH*	<b>Fair</b>
Highly Productive	<b>Good</b>
Moderate/Variable Environments	<b>Best</b>
Poorly Drained	<b>Best</b>

### Diseases and Pests

Phytophthora Root Rot (PRR) Source	<b>Rps1c</b>
Soybean Cyst Nematode (SCN) Races	<b>MR3</b>
(SCN) Source	<b>PI88788</b>
Root Knot Nematode (RKN) Incognita	-

For more information: Visit [syngenta.ca](http://syngenta.ca), contact our Customer Interaction Centre at 87-SYNGENTA, or follow @NKSeedsCanada on Twitter.

1-9 Scale: 1 = Best, 9 = Worst, (-) = Not Available.  
Adaptation and Responses: Best > Good > Fair > Poor.

Protein and Oil: Ultra High > Very High > High > Average > Low.  
Canopy Index: Reflects plant height, width and branching. 1 = Smallest, 9 = Largest.

**LIBERTY LINK** Seed products with the LibertyLink® (LL) trait are resistant to the herbicide glufosinate ammonium, an alternative to glyphosate in corn and soybeans, and combine high-yielding genetics with the powerful, non-selective, postemergent weed control of Liberty® herbicide for optimum yield and excellent weed control.

\* Represents an assessment of stand establishment, chlorosis severity and yield performance  
Performance evaluations are based on field observations and public information. Data from multiple locations and years should be consulted whenever possible. Individual results may vary depending on local growing, soil and weather conditions. IMPORTANT: ALWAYS READ AND FOLLOW SEED BAG/TAG DIRECTIONS.  
BASF, LibertyLink®, Liberty® and the Water Droplet logo are registered trademarks of BASF Group. Only seed labeled as tolerant to glufosinate may be sprayed with glufosinate ammonium based herbicides. Only 2,4-D choline formulations with Colex-D® Technology are approved for use with ENLIST E3® soybeans. The transgenic soybean event in ENLIST E3® soybeans is jointly developed and owned by Corteva Agriscience LLC and MS Technologies LLC. ENLIST®, ENLIST E3® and STS® are registered trademarks of Corteva Agriscience LLC. Trademarks and service marks are the property of their respective owners. © 2023 Syngenta.